



# The Norwich Inn



## Function & Events

Hosting groups up to 50 attendees  
Receptions to 100

### INDEX

#### Page

2. Welcome
3. Meeting/Event Space Information
6. Room Rental and Audio/Visual fees
7. Hors D 'œuvres Menu
8. Breakfast Menus
9. Lunch and Dinner Menus
10. Cakes and Desserts
11. Breaks and Meeting Packages
12. Planning Guide and Policies

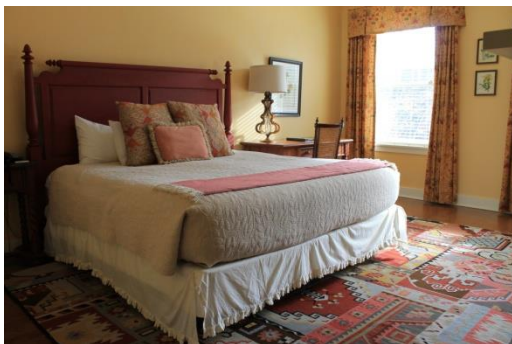
# Welcome

Thank you for your interest in our historic Inn – we are a full-service Country Inn priding ourselves in caring customer service, inventive locally-sourced cuisine, hand crafted ales and cozy lodging rooms.



The Norwich Inn is a one of a kind historic hotel dating back to 1797 when Dartmouth Graduate, Jasper Murdock served his first guests. We have over 3000 square feet of meeting and reception space to accommodate your meeting or function. We are located right off of exit 13 on I-91 in Norwich Vermont less than 2 miles from Hanover, NH and Dartmouth College. Norwich's iconic King Arthur Flour is less than a mile away. Enjoy the convenience of free parking, WiFi and phone calls in North America.

In addition to ample function space, we also feature 3 lodging buildings, 40 guest rooms and an on-site Brewery. There is the original Main Inn, which features all unique, updated, Victorian style rooms. In 2007, we added the Walker House and Ivy Lodge, including upgraded amenities such as gas fireplaces and heated towel racks. The Ivy Lodge offers rooms with their own front porch and pet-friendly options.





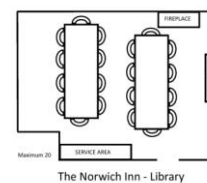
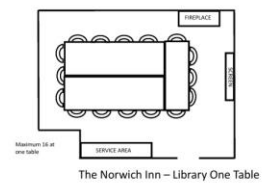
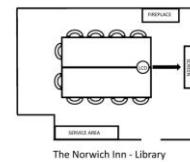
# Wine Room

Intimate room that can open up to the living room for receptions  
Dinner parties of up to 10



# Library

A comfortable room located on the main floor. It features a 60" smart TV for presentations.  
Seats up to 20 for banquets, 16 for meetings

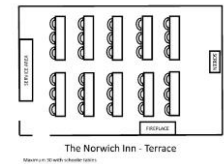
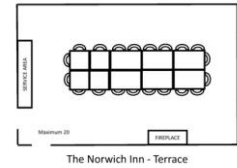
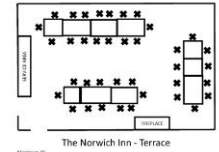


# The Terrace

Light and airy with a fireplace

Seats up to 30 for meetings and 40 for banquets

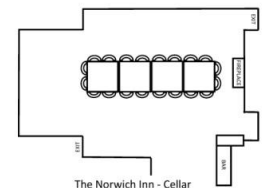
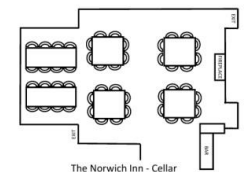
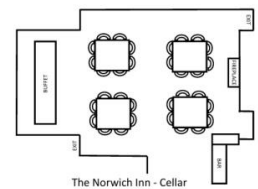
(Note: Can be combined with wine room to accommodate 50 for banquets)



# The Wine Cellar

Warm and relaxing; located downstairs with a fireplace- includes Inner Sanctum  
featuring over 200 bottles of wine

Seats 48 for banquets, 32 for meetings and 50 for receptions





# The Living Room

Spacious and Comfortable with wood burning fireplace  
Accommodates receptions up to 50; combined with adjacent spaces, 100



# The Beer Garden

A seasonal outdoor space for receptions  
Accommodates up to 75



## Private Event Room Rental Fees

| Room:       | Setup Fee: | Rental: |
|-------------|------------|---------|
| Wine Room   | \$25       | \$125   |
| Library     | \$25       | \$175   |
| Terrace     | \$50       | \$500   |
| Wine Cellar | \$50       | \$300   |
| Living Room | \$50       | \$250   |
| Beer Garden | \$50       | \$200   |

*Fees are subject to increase during special event weekends.*

## Audio Visual

The Inn offers the following Audio Visual in support of your meeting or event.  
*Priced per day*

*Available in all indoor spaces*

|                              |      |
|------------------------------|------|
| Flipchart with Pad & Markers | \$40 |
| Additional Pads \$15 ea      |      |
| White Board                  | \$40 |
| Conference Phone             | \$75 |

*Available in Library, Terrace and Wine Cellar*

|                  |      |
|------------------|------|
| Projector Screen | \$40 |
| LCD Projector    | \$80 |

*Available in Library only*

|          |      |
|----------|------|
| Smart TV | \$60 |
|----------|------|

For More Information on Food & Beverage Offerings and Pricing Contact Linda Kane (802) 649-1143 or

[Linda@norwichinn.com](mailto:Linda@norwichinn.com)

